

VILLA CECILE

FRANCE | SOUTH OF FRANCE



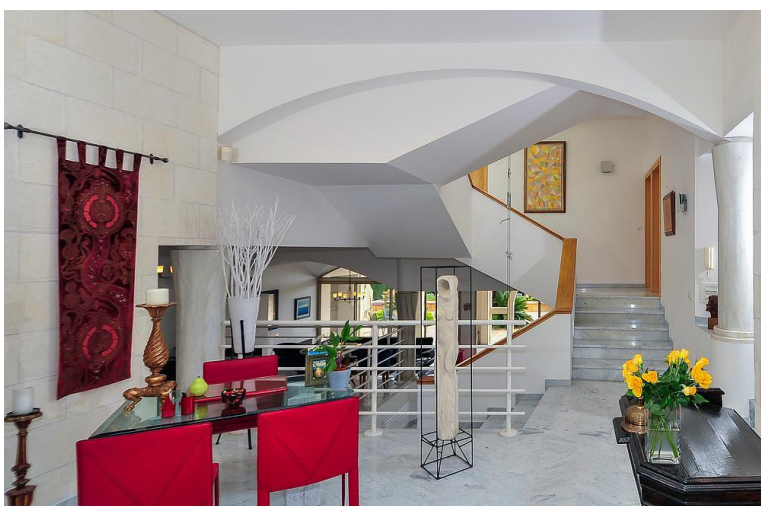
6 Bedrooms



12 Guests



£7735 - £12030 / week



- > Air Conditioning
- > Family villa
- > For large groups
- > Near golf courses
- > Near shops/restaurants
- > Near the airport
- > Near the beach
- > With seaviews
- > With WIFI

"Villa Cecile boasts luxury and comfort in equal measure. It is a charming villa nestled beneath the beautiful, medieval village of Saint-Paul-de-Vence with sweeping views towards the Mediterranean."

2 weeks minimum stay preferred in July-August (one week stays on request)

Set in the midst of the beauty, charm, art, festivities and rich culture of Provence, Villa Cecile is surrounded by elegant gardens, an exceptionally large swimming pool and an expansive terrace, as well as commanding views of the Riviera. Designed and built with luxury firmly in mind, the villa is very much a modern work of art itself constructed of albinic Provencal stone, sculpted in bold sweeping lines. A retractable glass-enclosed reception atrium, vaulted and pillared halls within & sleek marble flooring throughout give the villa an airy modern feel, while retaining a comfortable and intimate ambience.

The Villa is situated within 5,500 square meters of gardens and is accessed from a private road with a secured gate. It offers 6 bedrooms; all en suite and all with either a private balcony or terrace.

Only a short distance from the villa you will find the world famous Maeght Foundation and the town of Saint-Paul-de-Vence, with its art, shops, and restaurants - the centre of art, culture, shopping, cooking, sport and the natural beauty that make the Cote d'Azur world renowned.

ACCOMMODATION

Ground floor:

Entrance hall.

Living room, split level, door to terrace.

Sitting room, door to terrace.

Modern, fully equipped kitchen/ breakfast area, American fridge, oven, dishwasher, microwave, espresso machine and ice maker, door to terrace with built-in charcoal BBQ.

Dining room.

Bedroom 5: Double bed, en suite bathroom, door to terrace.

Bedroom 6: Double bed, en suite bathroom, door to terrace.

Bathroom.

First floor:

Sitting room, door to terrace.

Bedroom 1: Double bed, en suite bathroom, door to balcony.

Bedroom 2: Double bed, en suite bathroom, door to balcony.

Bedroom 3: Double bed, en suite bathroom, door to balcony.

Bedroom 4: Double bed, en suite bathroom, door to balcony.

Grounds:

5,000 m2 private mature gardens and multiple terraces.

Pool area with 18m x 8m private pool (Roman steps), sunbathing area with 12 sun loungers and parasols.

Lounge and outdoor dining areas.

Parking.