

VILLA PORTOBELLO

ITALY | SARDINIA



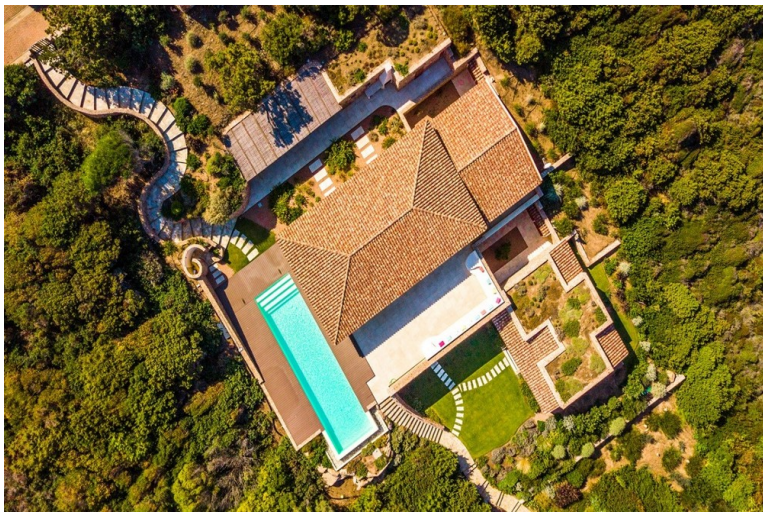
7 Bedrooms



14 Guests



£6265 - £18730 / week



- > Beach within 10 minute walk
- > Family villa
- > For large groups
- > Near shops/restaurants
- > Near the beach
- > With seaviews
- > With WIFI

"Walk to the nearest restaurant in 5 minutes and to the beach in 3 minutes from this magnificent villa with pool near Portobello di Gallura, on Sardinia's northern coast - and enjoy a luxury stay in one of Italy's most exclusive regions".

This unique, newly built luxury villa offers 7 spacious rooms, 7 bathrooms, an ample living room and large outdoor living areas. A perfect place for an unforgettable holiday in Sardinia for up to 14 guests.

The house is located just a few minutes by foot from the sea and offers a stunning sea view from the terrace and from the villa itself. Panoramic windows, natural stone, glass and wood have been used to create a house which is modern and highly technological but, in the meantime, maintains strong links with Sardinian tradition. There is a panoramic terrace with sundeck and an long 15m x 4m swimming pool with smart light system.

Barbecue area, private parking, a fully furnished kitchen and air conditioning system are available. The resort area access is restricted to the guests and with 24/7 surveillance. Speed limit 20kmh inside for children safety. Some private beaches, a mini-market, a restaurant and a small marina are available inside the resort. Olbia and Alghero international airports are 1,30h and 1,45h by car.

ACCOMMODATION

Villa of 300 sqm with private pool, 150 meters from the sea and the sandy beach, covering about 1500 square meters of land.

The villa is on 3 levels.

First level:

Swimming pool 4 x 15 m and 1.50 m deep. Patio and dining/relaxation area with sofas, barbecue area. Large sea view terrace furnished with armchairs and equipped with table and chairs.

Large open plan living room with TV area, dining area and fully equipped kitchen.

Suite with sea view and a large bathroom with tub plus shower.

Second level:

Staff area with double bedroom with en-suite bathroom with shower.

Laundry with washer and dryer.

Third level:

Annexe 1 - 1 double bedroom with en-suite bathroom with shower; 1 double room with twin beds and en-suite bathroom with shower.

Annexe 2 - 1 double bedroom with bathroom with shower en-suite; 2 double rooms with single beds and shared bathroom with shower.

Access to the residential park is allowed only to residents or guests and quiet and privacy is assured. There is an active security service 24 hours.