

GRANJA BALEAR

SPAIN | ISLAND OF IBIZA



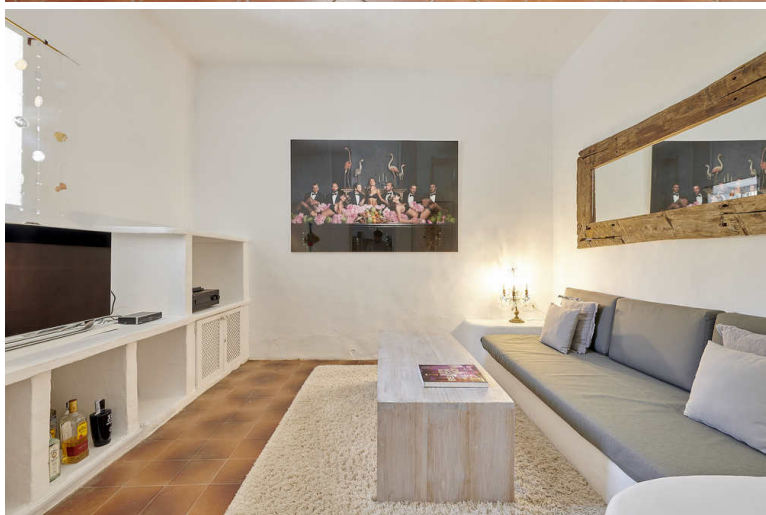
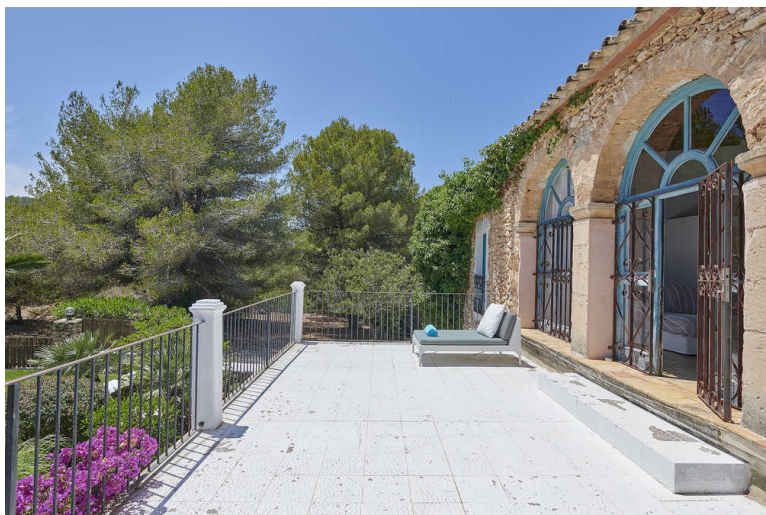
6 Bedrooms



12 Guests



£11050 - £15600 / week



- › Air Conditioning
- › Chef service available
- › Family villa
- › For large groups
- › Near shops/restaurants
- › Near the airport
- › Near the beach
- › Secluded location
- › With WIFI

"Combining a peaceful setting with the proximity to Talamanca's beach and Ibiza Town's restaurants and bars, this splendid contemporary farmhouse with pool sits on Ibiza's eastern coast, amidst the verdant rolling countryside so typical of this enchanting Mediterranean island".

This is an superb traditional 'finca' exuding character throughout, surrounded by lovely mature gardens in which you find several areas for relax or socialize with your family and friends, and dine al fresco under a bouganvillea-clad terrace gazing at the inspiring country scenery. Every detail has been meticulously taken care of and the contemporary interior decor is perfectly integrated within the structure of the traditional farmhouse which comprises a main villa and a separate, independent, 2-bedroom annex.

ACCOMMODATION

MAIN HOUSE

Ground floor:

Beautifully styled lounge, sofa area, door to large terrace with lovely views to the garden and pool area.

Large dining room, table for 6 people

Small TV room, Sat TV, comfortable sitting area.

Fully equipped kitchen, small sitting area and fireplace.

Laundry room, 2 washing machines, 2 tumble dryers.

Bedroom 1: Double bedroom, en-suite shower room, air conditioning. Bedroom 2: Double bedroom, en-suite bathroom, air conditioning.

First floor:

Bedroom 3: Double bedroom, air conditioning, door to balcony with beautiful views to the garden and pool area.

Bedroom 4: Double bedroom, air conditioning, door to balcony with beautiful views.

Shared shower room between bedrooms 3 & 4.

GUEST HOUSE

Set apart from the main house with an independent entrance.

Open plan living room, TV, air conditioning.

Small open plan kitchen/ breakfast area, table for 2 people.

Bedroom 5: Double bedroom, air conditioning, door to garden and pool area.

Bedroom 6: Double bedroom, air conditioning, door to garden and pool area.

Shared shower room between bedrooms 5 & 6.

Grounds:

Large mainly flat grounds with lush Mediterranean gardens planted with mature palm trees, shrubs and olive trees. Ample lawn areas. Private 10m x 5m pool (ladder), amazing views to the countryside.

Sunbathing area furnished with loungers. Chill-out areas with sofas. Pergola with table, covered outdoor dining area for 8 people. Secure parking within the grounds for 10 cars.

DISTANCES

Cafe: 5 km.

Bar: 6 km. Beach: 9 km.

Airport: 15 km.

Town of Jesus: 5 minutes' drive.

Ibiza Town: 10 minutes' drive.

Marina Botafoch: 10 minutes' drive.