

# VILLA SOLLER

SPAIN | ISLAND OF MALLORCA



**4 Bedrooms**

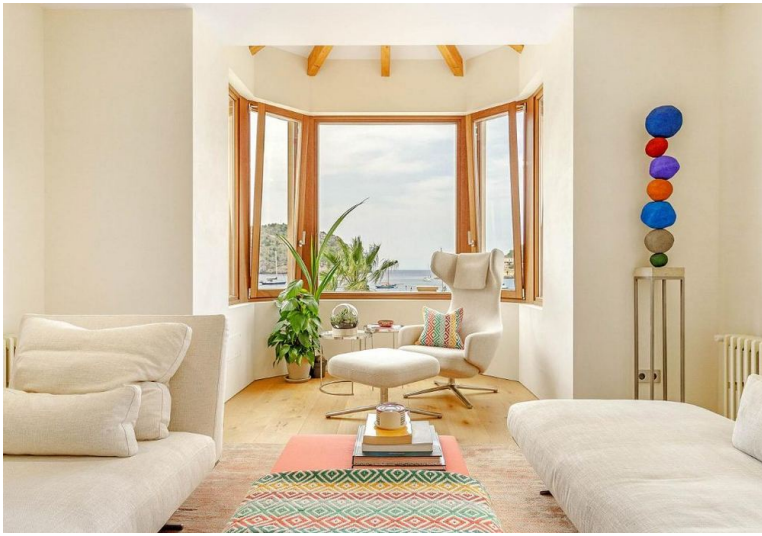


**8 Guests**



**£15740 - £26195 / week**









- › Air Conditioning
- › Beach within 10 minute walk
- › Chef service available
- › Family villa
- › Near shops/restaurants
- › Near the airport
- › Near the beach
- › With cot / highchair
- › With seaviews
- › With WIFI

"Its privileged seafront position overlooking the harbour of Port de Soller makes this elegant contemporary villa for 10 people ideal for enjoying the best Mallorca has to offer: striking sunsets, the calming view of the Mediterranean sea, shops, restaurants and a sandy beach on your doorstep".

This newly renovated property maintains its traditional Spanish charm while offering modern convenience and luxury. Apart from the bright, colourful tiling in the bathrooms, the fresh and elegant décor in the five bedrooms continues throughout the entire villa, with all rooms featuring a clean, modern, minimalist interior. The four double en-suite bedrooms are flooded with light and beautiful views. The fifth bedroom on the first floor sleeps two children on bunk beds.

Designed to maximise the impact of the sea, this villa boasts a magnificent entertaining terrace complete with dining table, chairs, chill-out seating, parasols and a long stretch of balustrade from where everyone can pick their perfect spot for watching the comings and goings of boats and people. On a further terrace you have your private pool. This is your space for taking it easy and soaking up the Mallorcan sun.

## ACCOMMODATION

### Interior

Three double bedrooms each with en-suite bathroom.

One bunk bedroom on the first floor, en-suite shower room.

Open-plan living & dining room, door to terrace with sea view.

Fully equipped kitchen, door to patio & pool area.

### Exterior

Swimming pool, outdoor dining & lounge area, sun loungers & parasols, outdoor shower.

Terraces with stunning views.

## DISTANCES

Nearest Airport: Palma de Mallorca, 36km.

Nearest Village: Port de Soller, 500m.

Nearest Town/City: Soller, 6km.

Nearest Restaurants & Shops: 500m.

Nearest Sandy Beach: 100m.

Nearest Golf Course: 19km.

Nearest Tennis Court: 27km.