

# VILLA SUMMER

TRADITIONAL & UNIQUE | TRADITIONAL SPAIN



**6 Bedrooms**

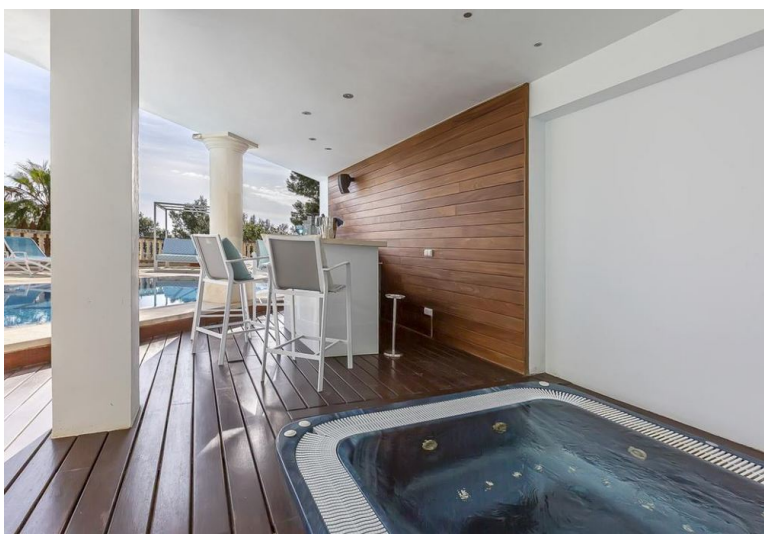


**12 Guests**



**£7995 - £19985 / week**









- › Air Conditioning
- › Family villa
- › For large groups
- › Gym
- › Near shops/restaurants
- › Near the airport
- › Near the beach
- › With seaviews
- › With WIFI

"Set high on the hills above Port Andratx, this chic modern villa with pool and spa area affords magnificent views over the Mediterranean Sea and the renowned Mallorcan coastal resort".

This tranquil and secluded retreat revels in the Balearic Island's beauty from the privacy of its own paradisiacal grounds. A stylish chic interior leading on to various sun terraces, balconies and a stunning picturesque view that takes in the Mediterranean. Offering easy access to stunning countryside, a wealth of walking trails, fascinating villas and just a short drive to the attractive city of Palma. Inside, polished tiled floors and whitewashed plaster walls are contemporary backdrops to carefully selected pieces of furniture and artwork. Ornate lighting, linen fabrics and modern fittings add warmth, and the overall vibe is relaxed and laidback with a twist of elegance and luxury. Groups of friends and family with older children will particularly appreciate the layout of the villa which allows for a degree of the independence and privacy.

This property comfortably sleeps 12 guests in 6 spacious bedrooms, with 5 bathrooms, ample living and dining areas, both indoor and outdoor. The private Spa on the lower level complements this perfectly relaxing setting in Mallorca with a sauna, hammam, gym and jacuzzi.

## ACCOMMODATION

### **Ground Floor:**

Ample living room with satellite TV, decorative fireplace and access to the terrace.

Open plan dining area for 8 people and access to the terrace.

Fully equipped kitchen.

Guest W.C.

### **First Floor:**

Bedroom 1: Master bedroom with super king-size bed, access to the terrace and en suite shower room.

Bedroom 2: Double bedroom with king-size bed, access to the terrace and en suite shower room.

Bedroom 3: Double bedroom with king-size bed, access to the terrace and en suite shower room.

Bedroom 4: Double Twin bedroom with two single beds.

Bedroom 5: Double Twin bedroom with two single beds.

Family bathroom.

### **Lower Ground Floor:**

Well-equipped fitness area and access to the patio.

Bedroom 6: Double bedroom with king size bed, access to the patio and en suite bathroom with walk-in shower.

Sauna room.

### **Grounds:**

Private swimming pool (Roman steps), sun loungers. Large patio and garden area. Covered terrace with al fresco dining facilities, BBQ. Garden furniture, garden bar area. Jacuzzi. Private parking.